

MagicTrader Plus

iPhone Streamer version

User Guide



Produced by Megahub Limited



Customer Service : (852) 2584-3820 / cs@megahubhk.com

This product described in this manual is the subject of continuous development and improvement. Whilst all information of a technical nature and particulars of the product and its use are given in good faith, MegaHub by publishing this document, does not guarantee that any information contained herein is and will remain accurate or that use of information will ensure correct and faultless operation of the relevant service or equipment. MegaHub, its agents and employees shall not be liable for any loss or damage whatsoever resulting from reliance on the information contained herein.

(c) 2012 Copyright, MegaHub Limited. All rights reserved



1a. Type in your Login ID and Password on the login page of MagicTrader Plus, then press login.

Remark : Wing Lung Customer need to add "wl_" as a prefix to existing login ID.

1b. Save your Username and Password.

1c. Directly enter the home page after the opening MagicTrader Plus program.

1d. Enter the language setting page.



2. Enter the quotation page after successful login.



3. Press the Bid/Ask column to view 10 Bid/Ask queue.



4. To change stock code,
 I. Type in the stock code in the input box
 II. Press enter

5. Slide the screen to left or right to find the following,
 - I. Basic Data, Technical Indexes and related Securities
 - II. Broker Queue



6. View the Brokers' names by pressing "Bid Broker ID" or "Ask Broker ID" bar.

7. View the detailed stocks chart by rotating the iPhone horizontally.



8. Tool bars are found by pressing the screen. Change the stock code on the top left hand corner. Choose the period at the bottom.



9. More options are found by pressing the gear icon on the right hand corner.

CHEUNG KONG (00001)
Daily (6 Months) 2011-08-10

SMA(10):115.69 SMA(20):117.11

Period

5 Days	3 Days	1 Day	
5 Min	3 Min	1 Min	

Chart Type

Volume

SMA

ON SELECT PARAMS

MACD

ON SELECT PARAMS

MACD (5,26) = -3.617 EMA (9) = -0.881 Div = 12.737

109.20
129.400
119.400
109.400
2.47
0.00
-2.52

Choose timeframe by sliding

Choose the chart type among candle, OHLC and bar and to show the Volume or not

Add chart analyses and change parameters in the main chart

Add chart analyses and change parameters at the bottom chart







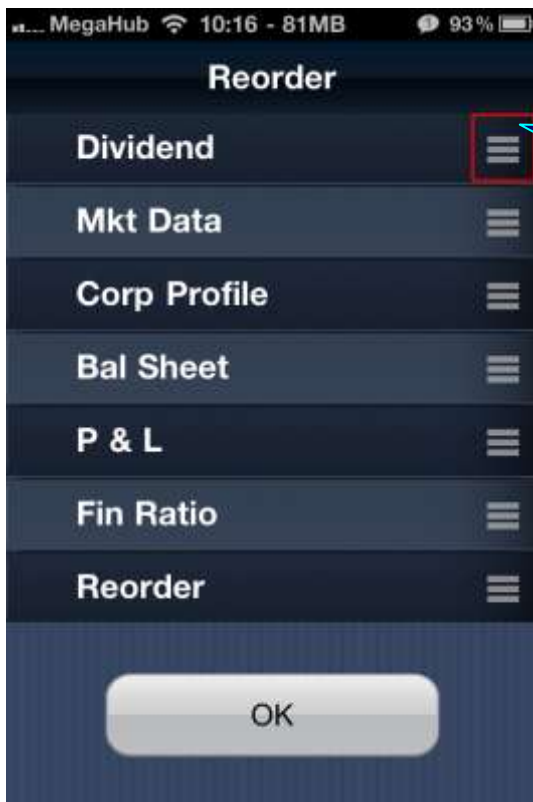
14. View the following by pressing “Fundamental”.

- i. market data
- ii. corporation profile
- iii. balance sheet
- iv. P&L
- v. finance ratio
- vi. dividend history

Reorder the options above by pressing “Reorder”.



15. View the details by pressing the dividend record.



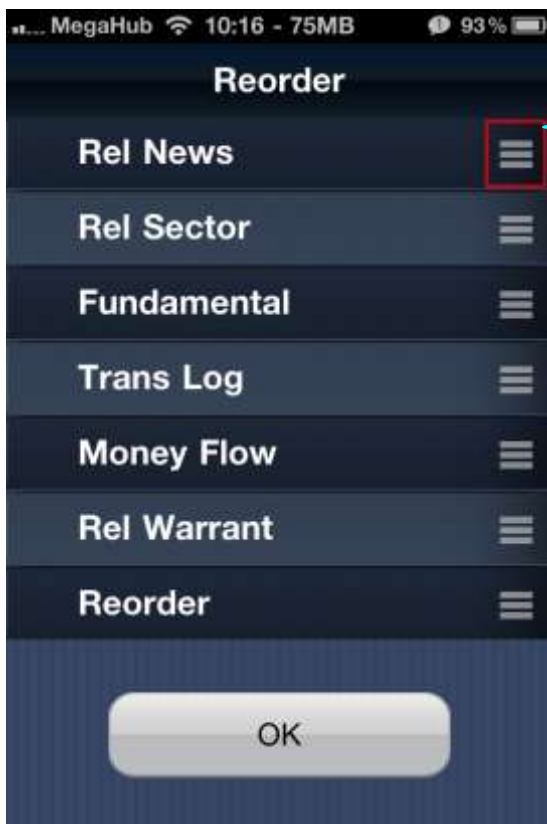
16. Reorder the option bar of "Fundamental" by dragging the button of the options and pressing "OK".



17. View the transaction Log by pressing "Trans Log".



18. View the graphs of VWAP and MFI&MF by pressing "Money Flow".



19. Reorder the option bar of "Quote" by dragging the options and pressing "OK".

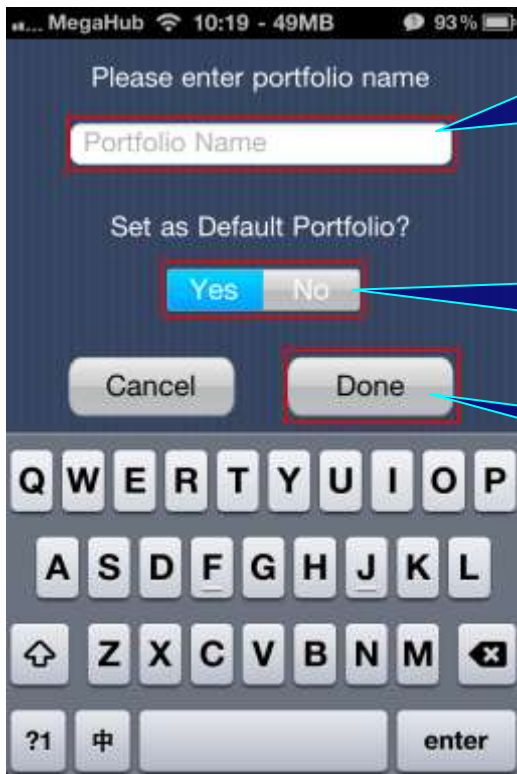


20. Add the stock to the Portfolios by pressing this icon.



21a. Create a new portfolio and add the stock to it by pressing "Yes, create new".

21b. Add the stock to the default portfolio by pressing "No, use existing".



22 a. Enter the name of the new portfolio in the blank after pressing "Yes, create new".

22b. Set the new portfolio to be default portfolio by pressing "Yes".

22c. Press "Done".



23. If you have not set the default portfolio, follow the steps after pressing "No, use existing".

- I. Choose the portfolio
- II. Press "OK"



24. Enter the portfolio page by pressing "Watchlist". Each portfolio can contain up to 20 stocks and automatically synchronize with PowerTicker 2.0.



25. View the Bid/Ask, volume and turnover of the stocks by pressing this icon.



26a. Change the content of the portfolio by pressing this icon.

26b. Add a stock to the portfolio by pressing this button and entering the stock code.

26c. Delete the stock from the portfolio by pressing the icon on the left and "Delete".



27b. Enter the stock code to search the news.

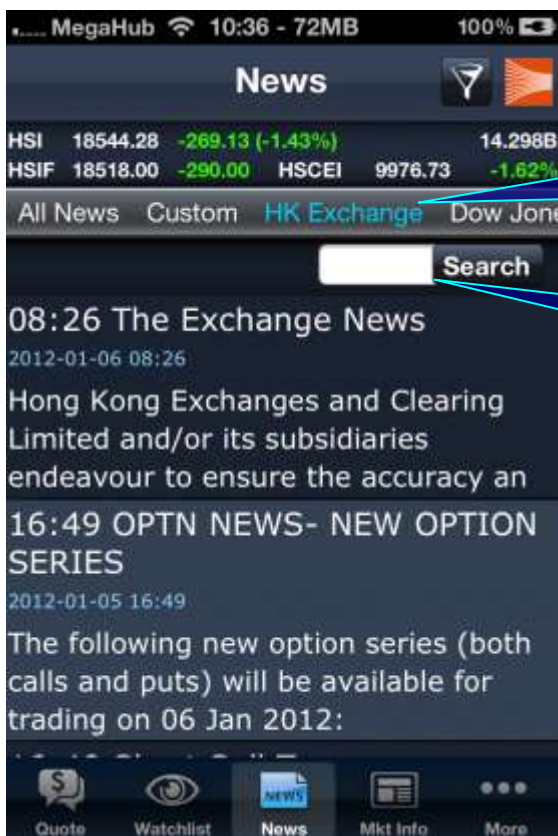
27a. Enter the news page by pressing "News".



28a. Filter the news source on the "Custom" page by pressing this icon.

28b. View the filtered news by pressing "Custom".

28c. Enter the stock code to search the news.



29a. View HKEx news by pressing "HKEx News".

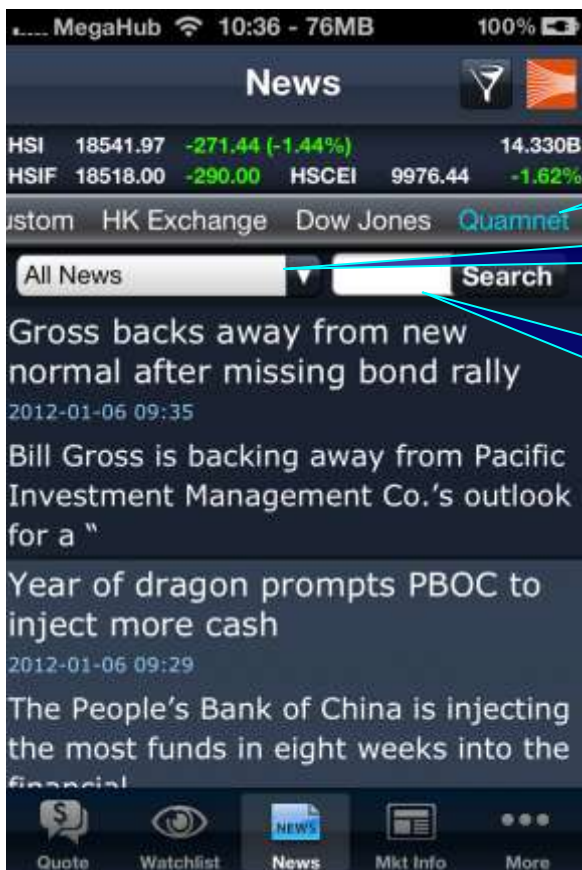
29b. Enter the stock code to search the news.



30a. View Dow Jones news by pressing "Dow Jones".

30b. Choose the news type.

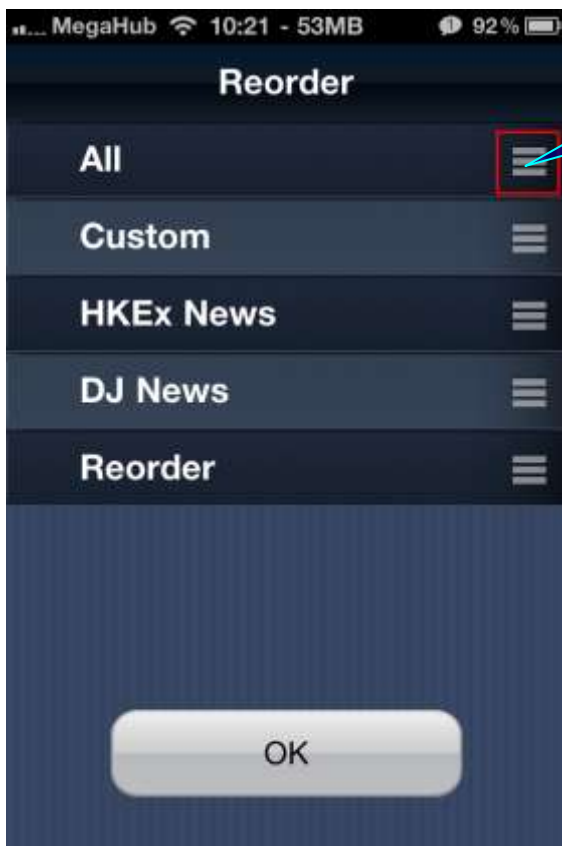
30c. Enter the stock code to search the news.



31a. View Quamnet news by pressing "Quamnet".

31b. Choose the news type.

31c. Enter the stock code to search the news.



32. Reorder the option bar of "News" by dragging the options and pressing "OK".



33. Enter the Local Index page by pressing "Mkt Info". Real-time major local indices are displayed.



34a. View the chart by pressing the index.

34b. View the constituents of the index by pressing the arrow.



35. View delayed major worldwide indices by pressing "World Index".



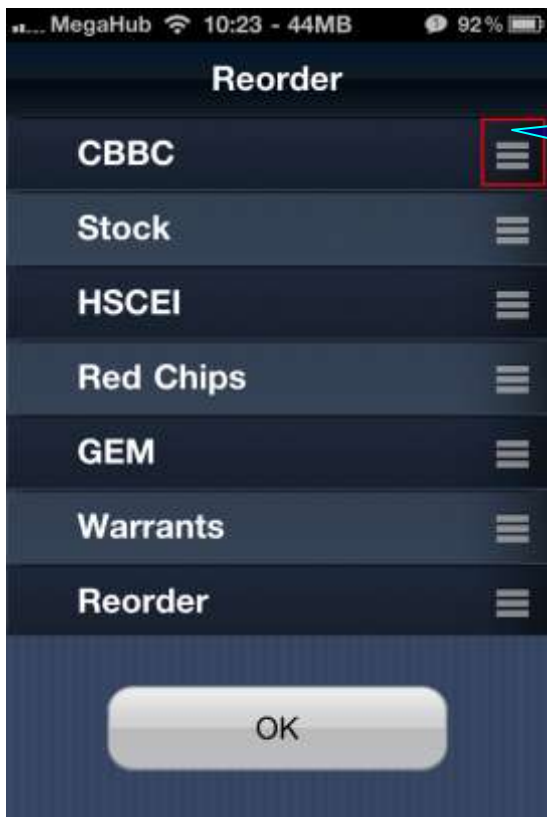
36. View the performance of Sectors by pressing "Sector".



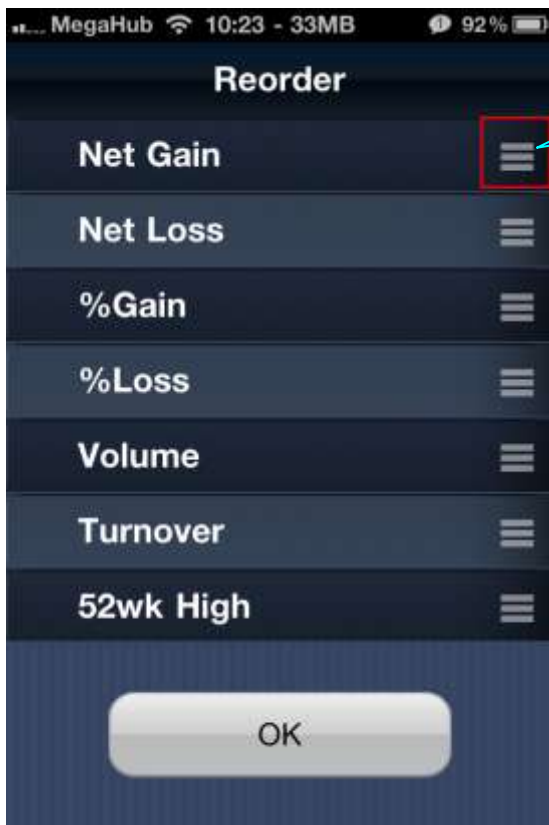
37. View the volume, turnover, Bid/Ask of the stocks in the sector by pressing this icon.



38. View Top 20 of stock, HSCEI, red chips, GEM, Warrants and CBBC in the following categories:
Net gain, net loss, % gain, %loss, volume, turnover, 52 week high, 52 week low.



39. Reorder the stocks category option bar of "Ranking" by dragging the options and pressing "OK".



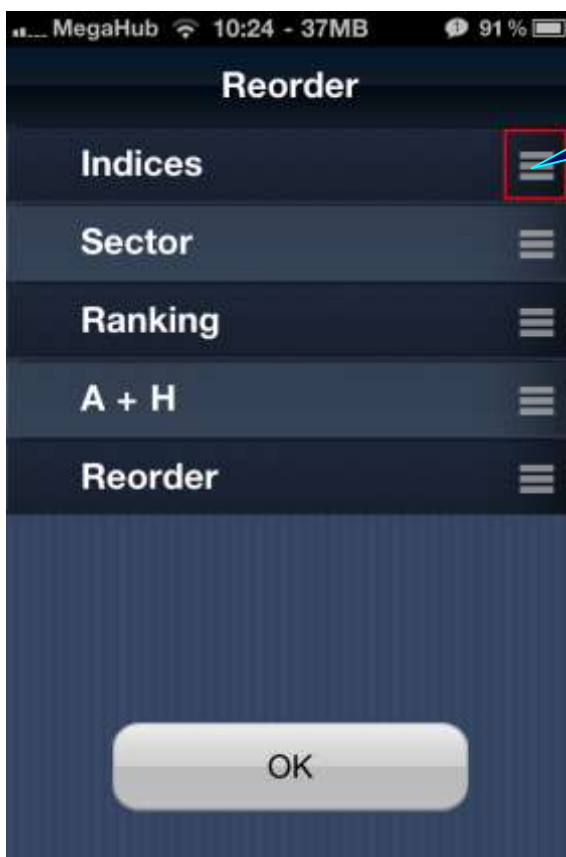
40. Reorder the ranking option bar of "Ranking" by dragging the options and pressing "OK".



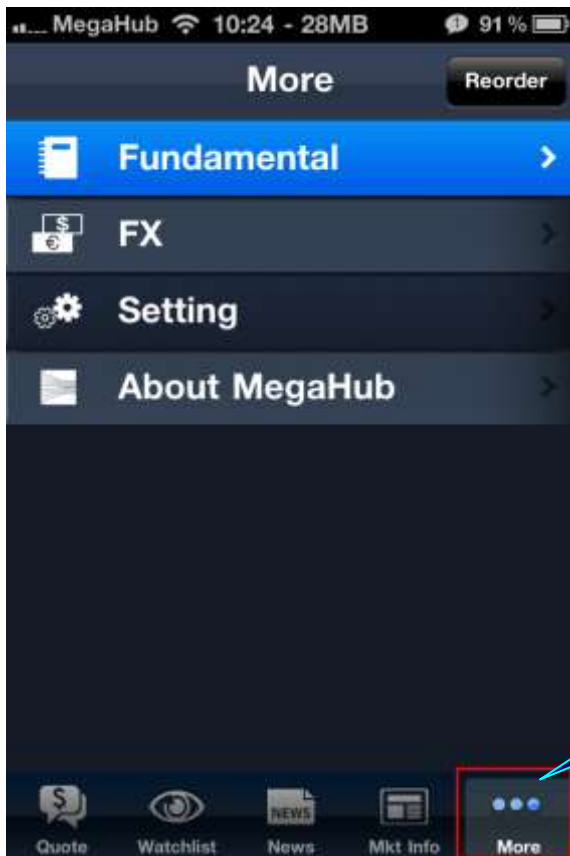
41. View the information of A share and H share by pressing "A+H".



42. View the change % of the A share and H share and the stock code by pressing this button.



43. Reorder the option bar of "Mkt Info" by dragging the options and pressing "OK".



44. Four Options are displayed on the "More" page.



45a. Enter the company fundamental page by pressing "Fundamental" on the "More" page. View marketing information by pressing the items.

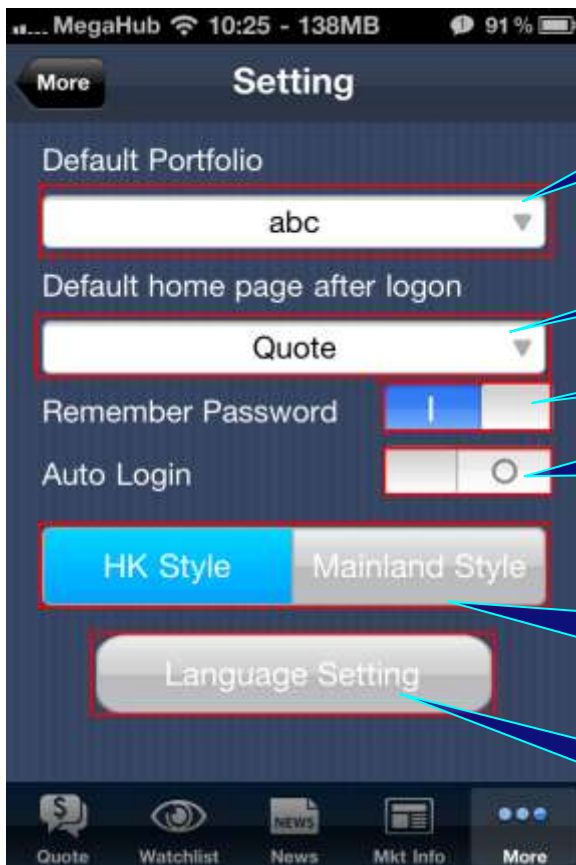
45b. View the company fundamental.



46. Enter the foreign exchange page of USD by pressing "FX" on the "More" page.



47. View the foreign exchange page of HKD by pressing "HKD"



48a. Set the default portfolio.

48b. Set the default home page.

48c. Save your Login ID and Password.

48d. Directly enter the home page after the MagicTrader Plus program is opened.

48e. Set the Style. Red for drop and green for rise for "HK Style"; red for rise and green for drop for "Mainland Style".

48f. Set the language between English, Traditional Chinese, Simplified Chinese and Japanese.



49. View the disclaimer by pressing "About MegaHub" on the "More" page.

--End--